

Top-class drainage/ surgical suction device

ATMOS® S 351



THE THINKING
SUCTION SYSTEM

ATMOS® S 351

What are your basic requirements with regard to a suction system in the operating theatre?

Considerable demands are made with regard to the reliability of medical technology especially in critical operating situations. During your daily work you are exposed to a noise level, which should not be underestimated – you do not need a rise in noise level due to the suction device employed in this connection!

In support of this ATMOS has a suction unit in that range which meets the following requirements:

- Absolutely stable vacuum due to processor controlled regulation automatism
- 100% precise vacuum setting due to sensor technology
- Tissue protection function: prevents damage to sensitive tissue caused by adherent cannulas. Whenever a pre-set maximum vacuum limit is reached, a valve opens and the suction system „lets go“.
- Automatic Standby Function: The system starts up automatically when secretion has to be extracted and stops when the secretion has been completely removed.
- In brief: small, quiet, safe!

Hydrophobic bacterial filter

with filter replacement indicator
REF 443.0738.0

Double socket nipple

for rapid jar replacement
REF 444.0012.0

Electric max. level control

with automatic shut down for disposable canisters.



Intermittent and constant suction

for OT, endoscopy and drainage applications

Safety jar

ensures no damage is caused by oversucking

Safety jar without filter REF 444.0646.0

Safety jar with filter REF 444.0646.1

Display

showing desired/actual vacuum
choice of mbar, mmHg oder kpa

Processor-controlled automatic control system

Simple and rapid vacuum preselection at the touch of a button, no loss of air, unlike mechanical vacuum controllers



ATMOS® S 351 — The thinking suction system

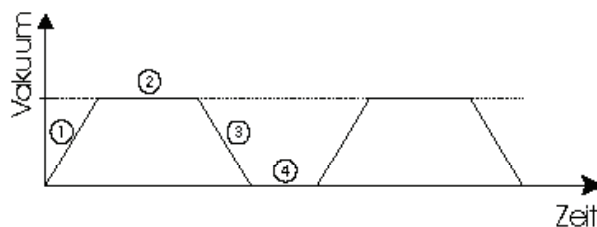
Automatic suction

- In the auto standby the ATMOS® S 351 checks every 5 seconds whether a vacuum can be built up. Once liquid is detected, the suction starts automatically. The selected target vacuum will be built up.
- When no liquid is detected for 30 seconds and the unit suchs air, the pump switches to standby.

Long life time and less noise disturbance are the result!

Intermittent function

The ATMOS S 351 offers a particularly convenient intermittent function, as the 4 phases can be adjusted individually.



Phase 1: Soft start-up to a target vacuum (Standard settings for start-up = 10s)

Phase 2: Hold of target vacuum (Standard settings for holding = 60s)

Phase 3: Controlled air ventilation (Standard settings for air ventilation = 10s)

Phase 4: Pause (Standard settings for pause = 60s)

This function can also be used as fine suction (tissue protection system) to protect sensitive tissue.



Technical Data

Noise level:	46 dB (A) @ 1 m (acc. to ISO 7779)
Voltage:	230 V~ 50/60 Hz; special voltage: 115 V~ 50/60 Hz
Dimensions (H x W x D):	300 x 330 x 200 mm, without trolley; 840 x 490 x 520 mm, with trolley
Weight:	10.2 kg, without secretion jar, without trolley; / with trolley: 24.7 kg
Classification:	protection category: IPX0; protection class: I; degree of protection: type B, class: IIa (acc. to appendix IX directive 93/42 EEC)
Air flow rate of pump:	36 ± 2 l/min

ATMOS® S 351 — Order Suggestion

	REF
ATMOS® S 351 OT Set	444.0476.0
Foot controller	444.0452.0



ATMOS® S 351

ATMOS® S 351 OT basic unit 1.5 l canister (Glas)	REF
<p>Microprocessor-controlled suction unit with graphic-LCD-display, automatic vacuum control, standby automatic, filling level control with automatic switching off, suction adherence detection and intermittence for protecting delicate tissue and for gastroscopic and wound drainage, safety canister 250 ml for condensed water, bacterial filter with hydrophobic attribute.</p> <p>1 Included in delivery: basic unit, mains cable, operating instructions, safety canister 250 ml, set with 1.5 l canister (Glas) incl. lid and double socket nipple, hydrophobic bacterial filter, hose holder, hose Ø 10 mm, L = 2 m, hose Ø 6 mm, L = 1.3 m</p>	444.0462.0
<p>ATMOS® S 351 OT set with 2 x 3 l canister (Glas)</p> <p>2 Included in delivery: basic unit, trolley, mains cable, operating instructions, safety canister 250 ml, set with 2 x 3 l canister (Glas) incl. lid and double socket nipple, hydrophobic bacterial filter, hose holder, hose Ø 10 mm, L = 2 m, hose Ø 6 mm, L = 1.3 m</p>	444.0476.0
<p>ATMOS® S 351 - basic unit</p> <p>Microprocessor-controlled suction unit with graphic-LCD-display, automatic vacuum control, standby automatic, filling level control with automatic switching off, suction adherence detection and intermittence for protecting delicate tissue and for gastroscopic and wound drainage, small secretion canister 250 ml incl. bacterial filter with hydrophobic attribute.</p> <p>3 Included in delivery: basic unit, mains cable, operating instructions, safety canister 250 ml, hydrophobic bacterial filter, hose holder, hose Ø 10 mm, L = 2 m, hose Ø 6 mm, L = 1.30 m</p>	444.0460.0



1 REF 444.0462.0



2 REF 444.0476.0



3 REF 444.0460.0

Accessories

Accessories	REF
<p>1 Secretion canister lid incl. standard rail holder with overflow electrode and splash protection</p>	444.0015.0
<p>2 Double socket nipple consisting of double socket nipple and hose reduction</p>	444.0012.0
<p>3 Graduated secretion canister 1.5 l Height 192 mm, external Ø 115 mm</p>	444.0032.0
<p>4 Graduated secretion canister 3 l Height 247 mm, Ø 145 mm</p>	444.0033.0
<p>5 Graduated secretion canister 5 l Height 302 mm, Ø 169 mm</p>	444.0034.0



1 REF 444.0015.0



2 REF 444.0012.0



3 REF 444.0032.0



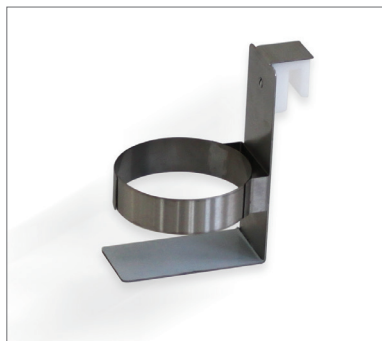
4 REF 444.0033.0



5 REF 444.0034.0

Accessories

Accessories for ATMOS® S 351		REF
1	Standard rail support For disposable system Medi-Vac® 1 l, 1.5 l	444.0451.0
2	Safety canister 250 ml, for condensed water	444.0646.0
3	Safety canister 250 ml with integrated DDS-bacterial filter / overflow stop, incl. adapter for arthroscopy (Shaver, Lavagen), oral and maxillofacial surgery, liposuction etc.	444.0646.1
4	Trolley with antistatic castors	444.0020.0
5	Trolley on 4 castors, self-assembly Attention: Trolley and small suction units cannot be screwed up in standard version! If required, we will deliver a special design of the suction unit.	320.0070.0
6	Foot controller electrical, water-proof IPX 8, AP-protected	444.0452.0



1 REF 444.0451.0



2 REF 444.0646.0



3 REF 444.0646.1



4 REF 444.0020.0



5 REF 320.0070.0



6 REF 444.0452.0

Consumables

Consumables for ATMOS® S 351	REF
<p>1 Suction hose, disposable, Ø 6 mm, L = 2.10 m, 50 pcs. Change: 1 x per patient</p>	006.0059.0
<p>2 Suction hose, silicone, Ø 10 mm, L= 2m, 1 pc temperature-resistant up to 200 °C</p>	000.0243.0
<p>3 Suction hose, silicone, Ø 6 mm, L = 1.30 m, 1 pc. single packed, temperature-resistant up to 200 °C</p>	000.0013.0
<p>4 Bacterial filter for DDS secretion canister, 10 pcs. disposable, not autoclavable, For hygienic reasons a weekly ex- change is recommended. In case of contamination or new patient the filter must immediately be replaced</p>	340.0054.0
<p>5 Bacterial filter disposable, not autoclavable, change: 1 x per patient</p>	443.0738.0
<p>6 Bacterial filter FFG - hydrophobic</p>	444.0082.0



1 REF 006.0059.0



2 REF 000.0243.0



3 REF 000.0013.0



4 REF 340.0054.0



5 REF 443.0738.0



6 REF 444.0082.0



MedizinTechnik

ATMOS MedizinTechnik GmbH & Co. KG

Ludwig-Kegel-Str. 16

79853 Lenzkirch / Germany

Tel: +49 7653 689-374

ApplicationSolutions@atmosmed.com

www.atmosmed.com